

Photo: Credit VERTIC, NL

PRODUCT ADVANTAGES

- ▲ Ideally suited for use in raised installation, on the under-surface of the roof, or when the fall clearance is incompatible with a cable system
- ▲ Ideal for working at a distance, or in association with a high weight block
- ▲ Various routes may be used, thanks to the switch which enables continuous movement
- ▲ Reduced height of fall owing to the rigidity of the system
- ▲ Can be installed on the majority of the roofs, thanks to the ALTIFIX supports suitable for the rail system

Can be specially bent upon request





Several possible uses



Lateral circulation

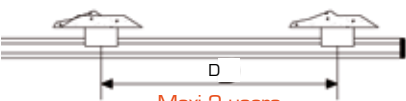


Circulation on the top of the rail



Overhead position

Recommendations for use



Maxi 2 users
per interval

D = 4 meters for using the rail only as a fall arrest system

D = 2 meters recommended for suspension use

Ball bearing carriage

The mobile VERTIC carriage is made to roll under load.

It allows mobility when working in suspension, or associated with a self-retractable lanyard.

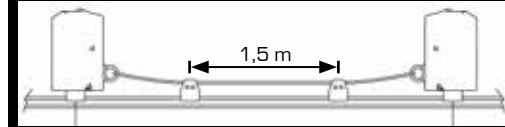
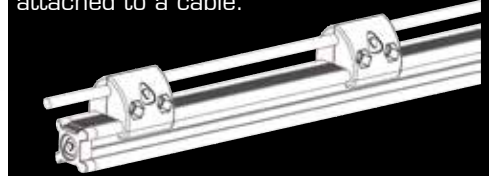


R.CF3



ALTIRAIL/CABLE combined configuration

For special applications where there is no support available, the rail may be attached to a cable.



MOTORIZED SWITCH

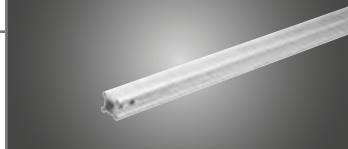
Ensures the safety of warehouses with a significant height. The switch can be used and activated at a distance thanks to a remote control.



COMPOSANTS ALTIRAIL®

Aluminium rail

R.RAIL3



Supplied in 3m length, drilled and milled.

Entry/Exit piece for carriage

R.RO



Can be installed at any location on the rail, to allow the installation of the different carriages.

Retractable end stop

R.BE



This end stop enables the carriage to be fitted at the end of the rail. Automatic locking.

Fixed end stop

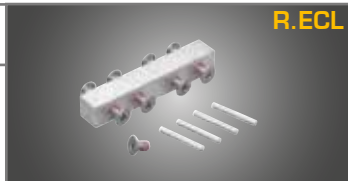
R.EXTF



Blocks the carriage at the end, securing the system. Finishes the extremity of the rail nicely.

Rail coupling block

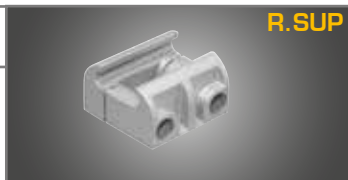
R.ECL



Allows assembling two lengths of rails. The 4 pins ensure a perfect lining up of the rail.

Opening support

R.SUP



Made of copper-aluminium, it facilitates the fitting and removal of the rail. Also permits free expansion of the rail.

R.AIG3D/R.AIG4D



Switches

Allow a continuity of movement, and the change of circulation of the carriage. Available in 3 or 4 directions.

R.CF2



Rail carriage with rollers

The mobile VERTIC carriage is fitted with multiple rollers to provide perfect movement, whatever position is used.

R.A90E/R.A90S



90° corner for lateral movement

Interior or exterior angle to allow the carriage to circulate sideways.

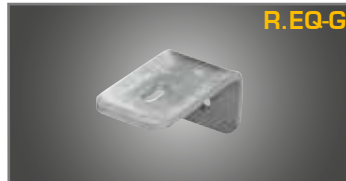
R.A90S2 / R.A90E2



90° corners for movement on under surface

Interior or exterior angle to allow the carriage to circulate under-surface.

R.EQ-G



Mounting angle

Allows mounting the rail on a facade, when circulation is done under-surface.

R.PS



Safety sign

Must be installed at the access of the system. Allows the identification and the control of the system.