



Photo credit: JORGE LOZANO

## PRODUCT ADVANTAGES

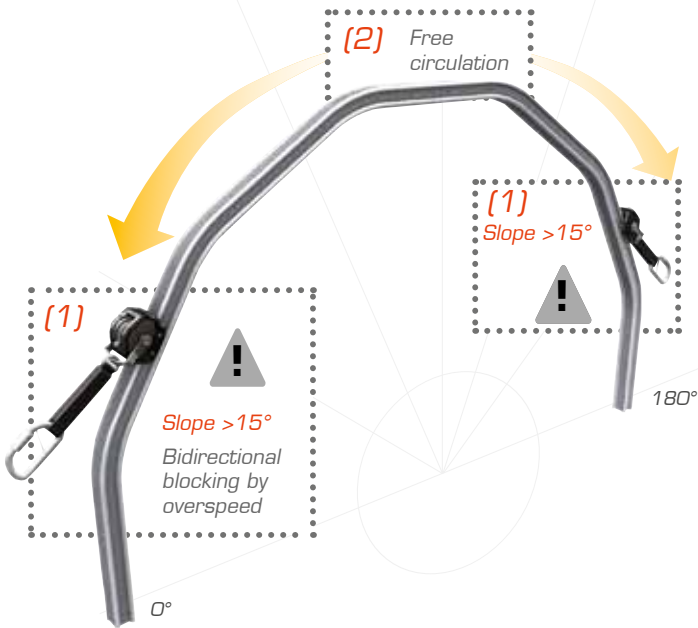
- ▲ Rigid belaying system, vertical, inclined and horizontal
- ▲ Mobile fall arrest carriage fitted with a bidirectional centrifugal locking mechanism
- ▲ The locking feature can be disabled in horizontal position
- ▲ Can be installed on the majority of the roofs, owing to the ALTIFIX supports suitable for the rail system

Can be specially bent upon request





## BIDIRECTIONAL LOCKING SYSTEM on slopes from 15 to 90°



## Bidirectional blocking carriage

The mobile VERTIC carriage is fitted with multiple rollers to provide perfect movement, whatever position is used.

(1) Bi-directional locking, only when the operator requires it. Locking by excess speed whatever the slope of the support.

(2) The locking feature can be disabled for slopes of less than 15°.



R.CB2

## COMPONENTS COMBIRAIL®

### Aluminium rail

R.RAIL3

Supplied in 3m lengths, drilled and milled.



### Inclination indicator

R.INC

Warns the operator when there is a change of inclination of the rail, to allow to adjust its fall arrest lanyard.



### Retractable end stop

R.BE

This end stop enables the carriage to be fitted at the end of the rail. Automatic locking.



### Fixed end stop

R.EXTF

Blocks the carriage at the end, securing the system. Finishes the extremity of the rail nicely.



### Rail coupling block

R.ECL

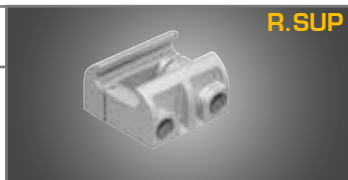
Allows assembling two lengths of rails. The 4 pins ensure a perfect lining up of the rail.



### Opening support

R.SUP

Made of copper-aluminium, it facilitates the fitting and removal of the rail. Also permits free expansion of the rail.



R.AIG3D/R.AIG4D



### Switches

Allow a continuity of movement, and the change of circulation of the carriage. Available in 3 or 4 directions.

R.RO



### Entry/Exit piece for carriage

Can be installed at any location on the rail, to allow the installation of the different carriages.

R.A90E/R.A90S



### 90° corner for lateral movement

Interior or exterior angle to allow the carriage to circulate sideways.

R.A90S2 / R.A90E2



### 90° corners for movement on under surface

Interior or exterior angle to allow the carriage to circulate under-surface.

R.EQ-G



### Mounting angle

Allows mounting the rail on a facade, when circulation is done under-surface.

R.PS



### Safety sign

Must be installed at the access of the system. Allows the identification and the control of the system.